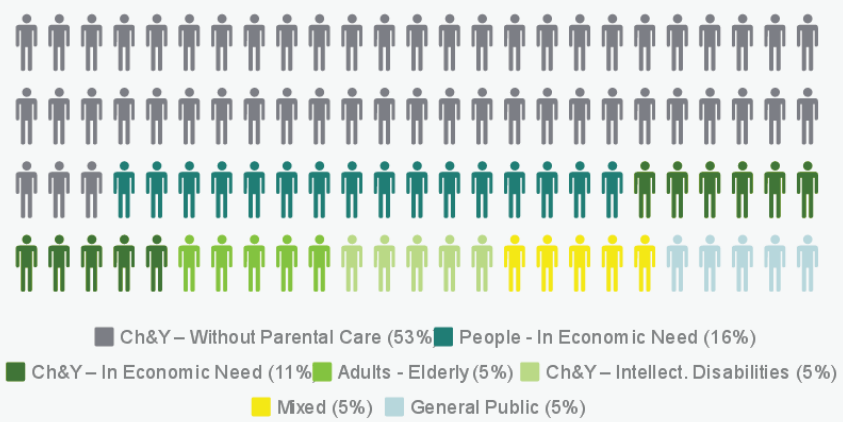
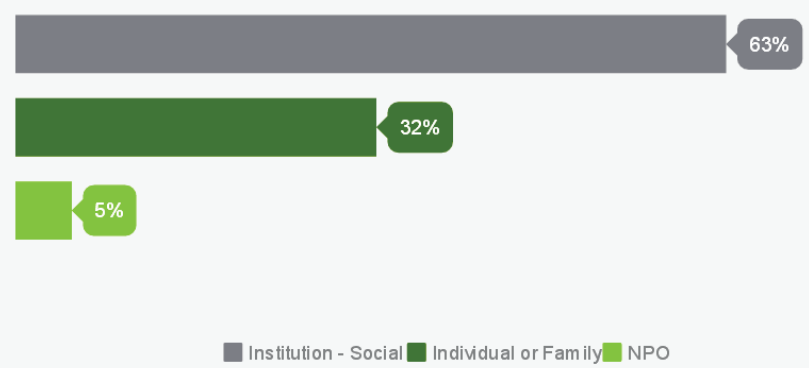


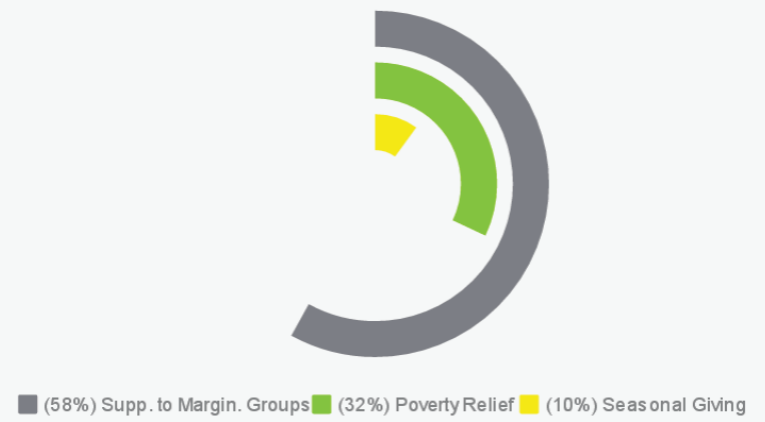
Final Beneficiaries



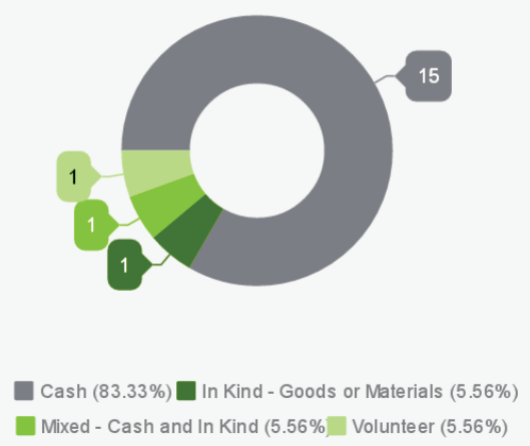
Channels of Donation



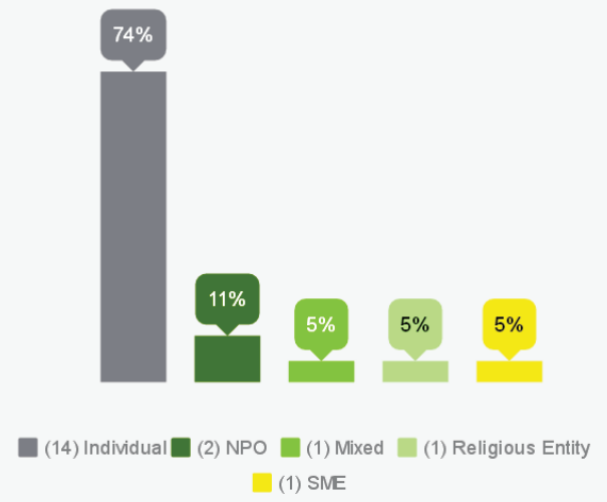
Purpose of Donation



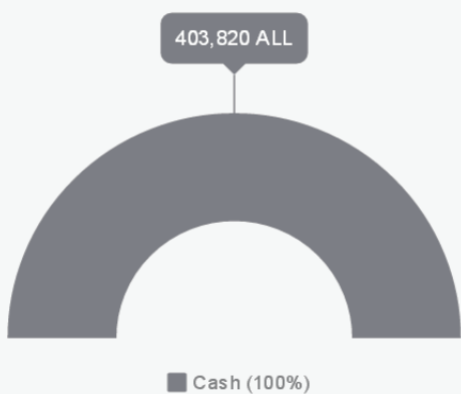
Number of Donations



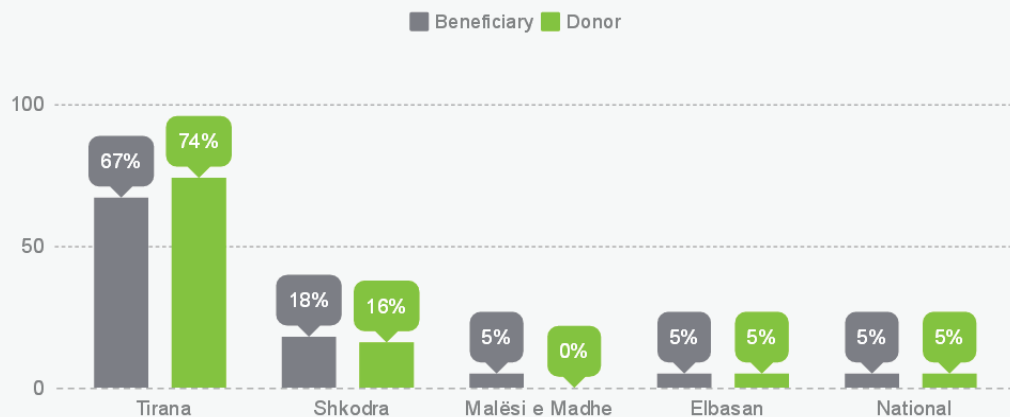
Number of Donors



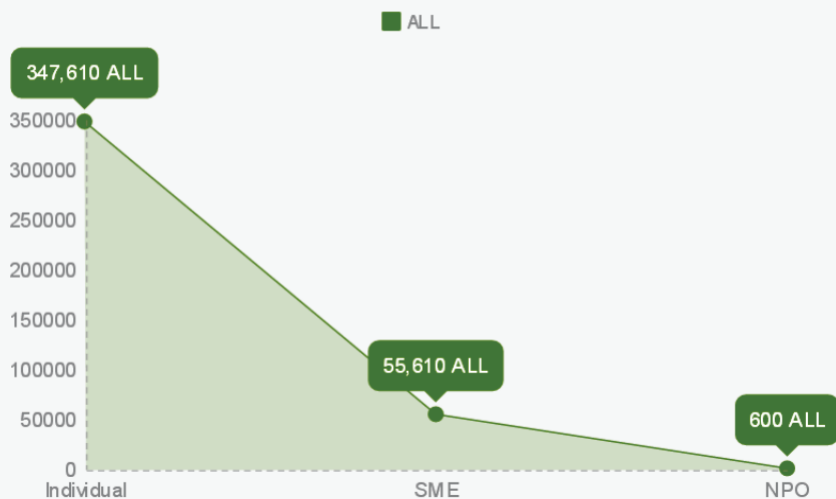
Value of Donations by Nature



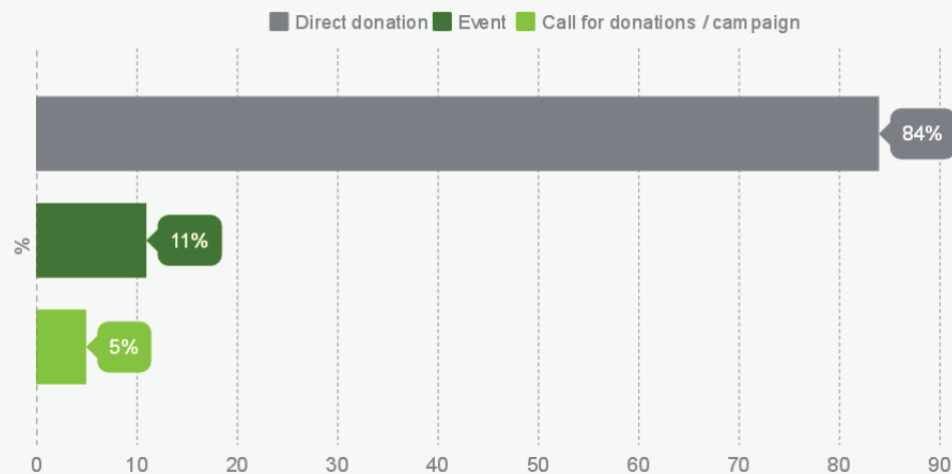
Geographic Coverage of Donations



Value of Donations by Donors Nature



Category of Donation



Mass Individual - A small or large group of people
 Mixed - Donations combined of more than one category / town.
 Seasonal Giving - Donations made during the holidays season
 SME - Small and Medium Enterprises
 Ch&Y - Children and Youth

NPO - Non-Profit Organization
 General Public - Groups of people or individuals who where assisted through economic and material aid in cases of natural recovery from disaster, or difficulties of living
 Poverty Relief - Donations carried out with the aim to mitigate poverty for individuals or families living in economical difficulties or during natural disasters