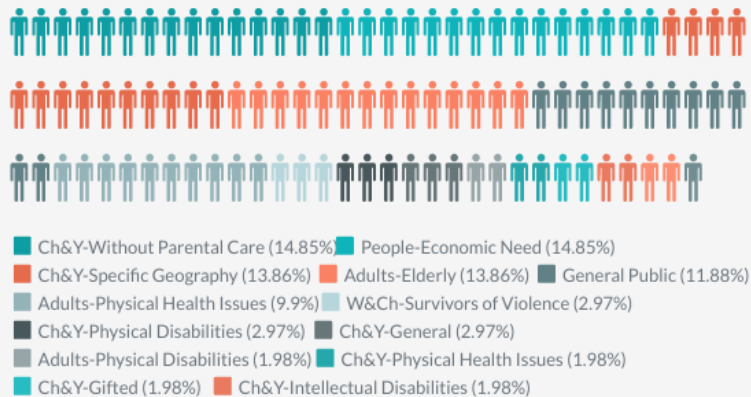
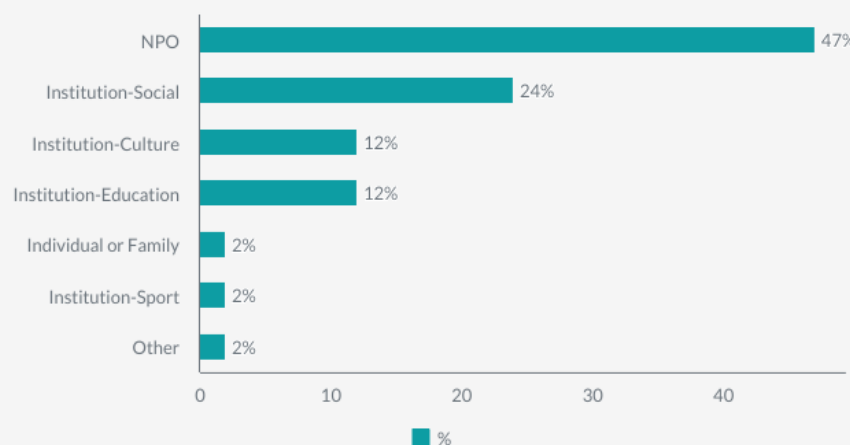


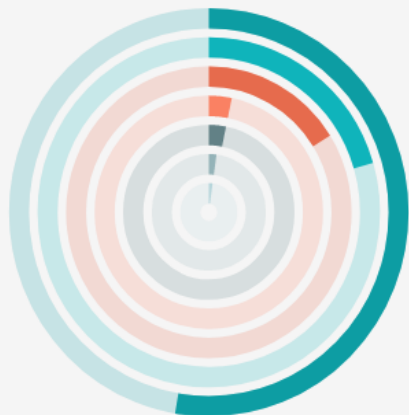
### Final Beneficiaries



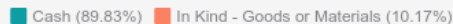
### Channels of Donation



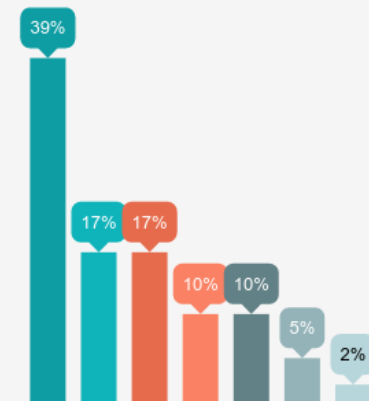
### Purpose of Donation



### Number of Donations



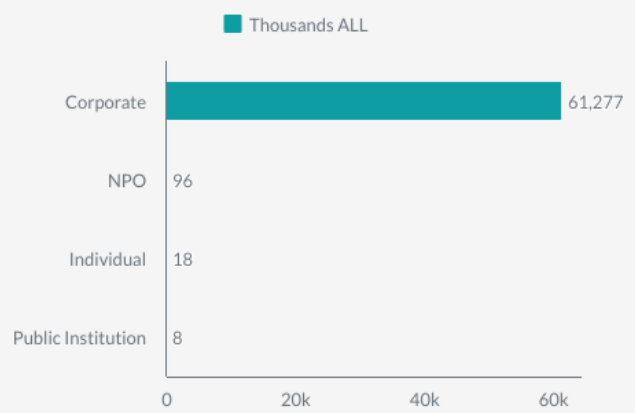
### Number of Donors



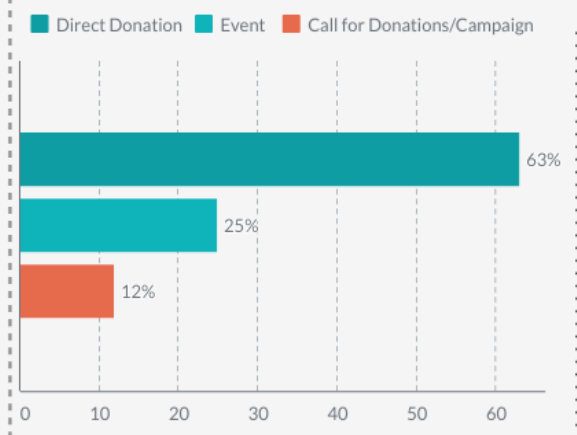
### Value by Nature



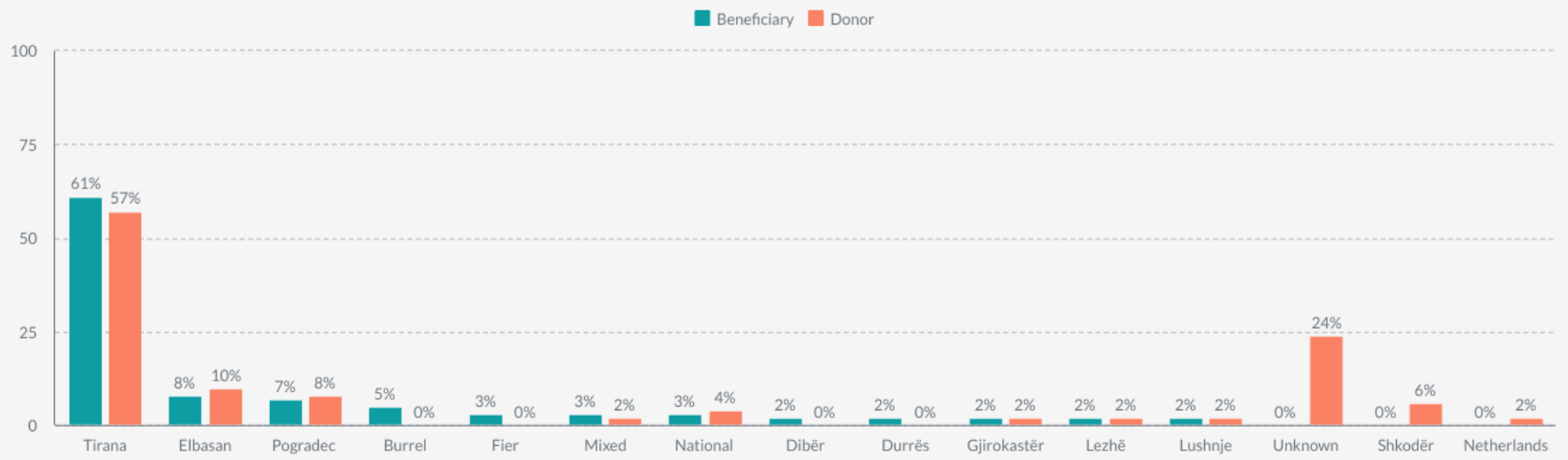
### Value by Donors



### Category of Donation



### Geographic Coverage of Donations



Mass Individual – A small or large group of people  
 Mixed - Donations combined of more than one category / town.  
 Seasonal Giving - Donations made during the holidays season  
 SME - Small and Medium Enterprises  
 Ch&Y - Children and Youth

NPO – Non-Profit Organization  
 General Public - Groups of people or individuals who were assisted through economic and material aid in cases of natural recovery from disaster, or difficulties of living  
 Poverty Relief – Donations carried out with the aim to mitigate poverty for individuals or families living in economical difficulties or during natural disasters