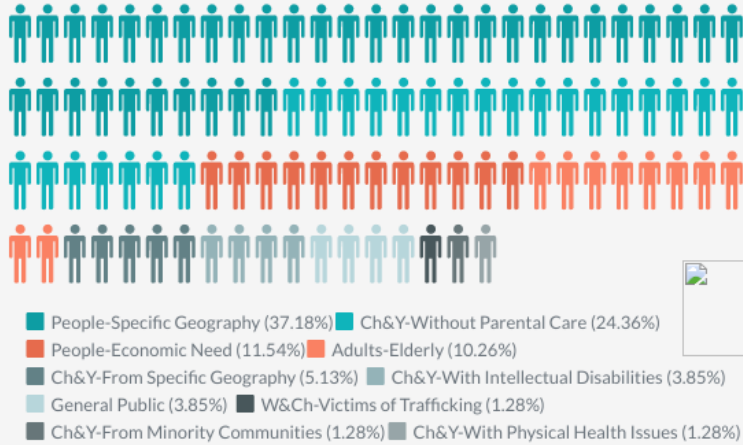
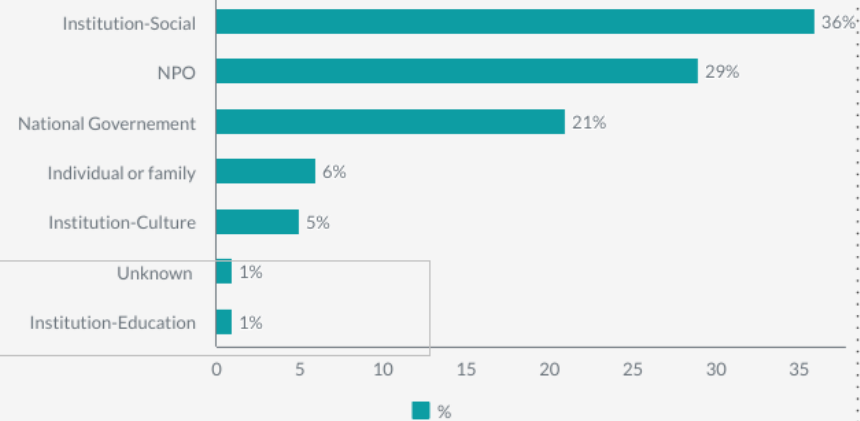


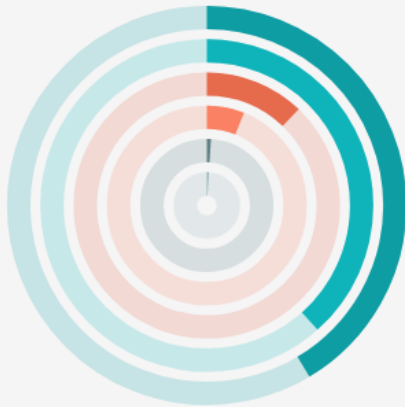
Final Beneficiaries



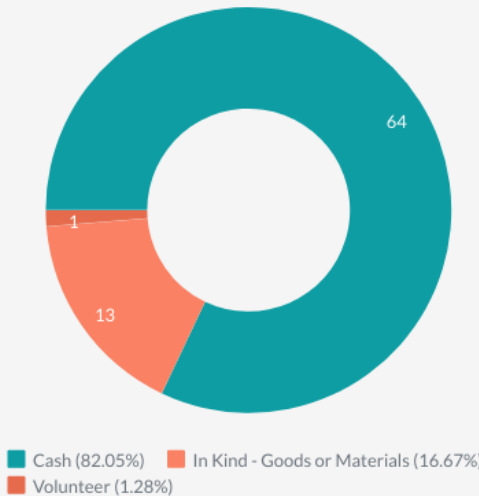
Channels of Donation



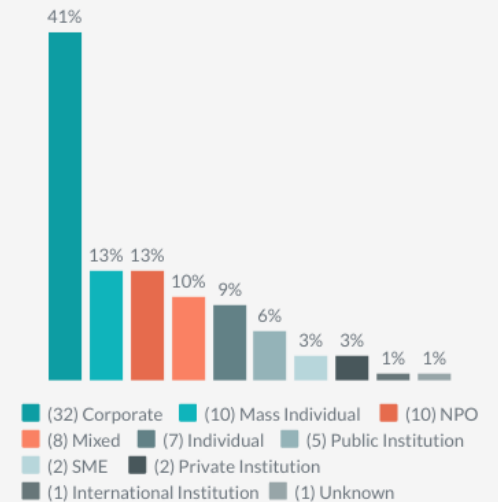
Purpose of Donation



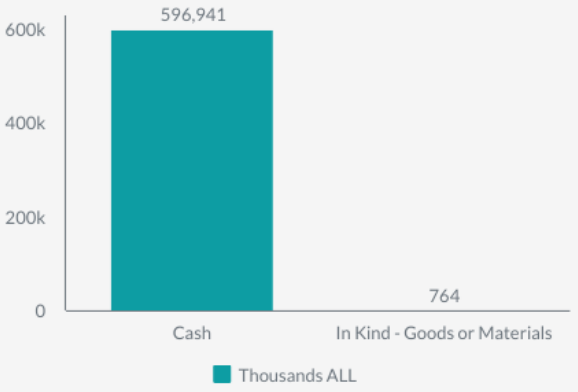
Number of Donations



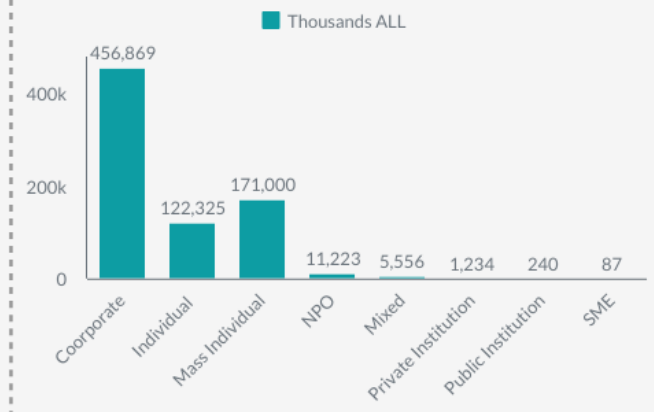
Number of Donors



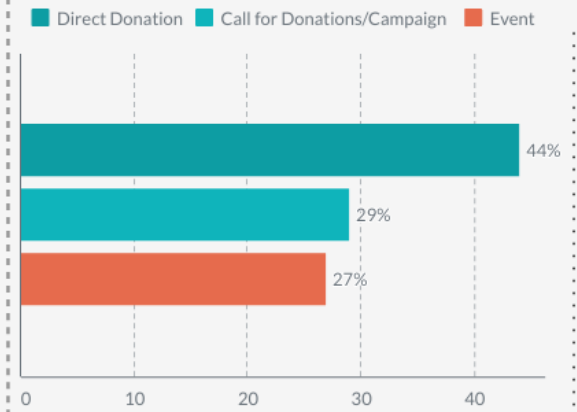
Value by Nature



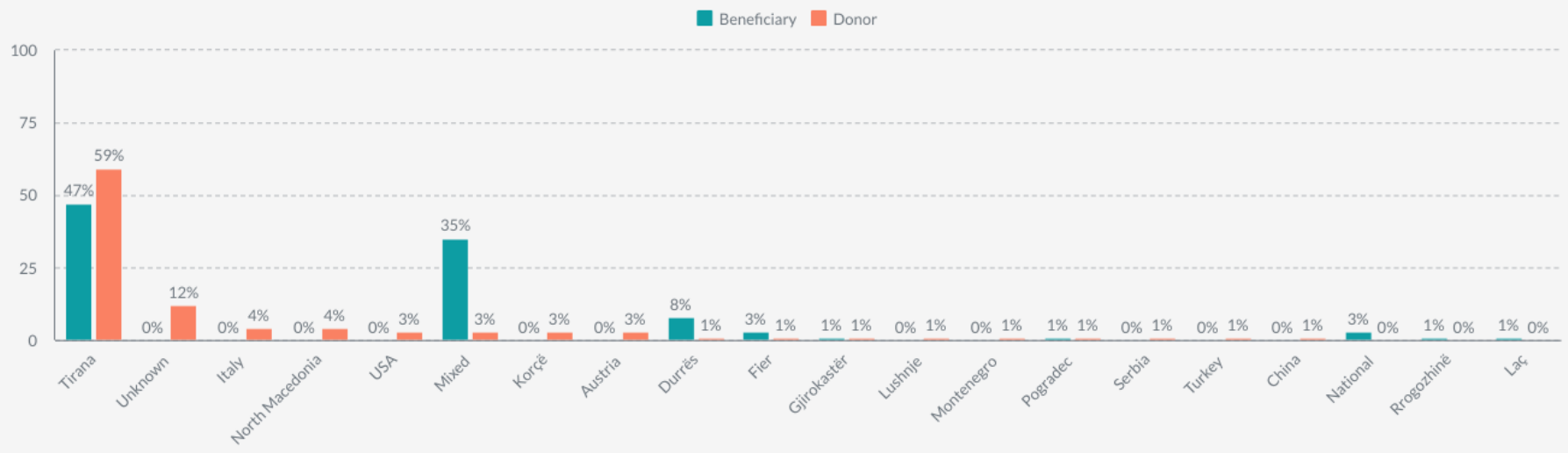
Value by Donors



Category of Donation



Geographic Coverage of Donations



Mass Individual – A small or large group of people
 Mixed - Donations combined of more than one category / town.
 Seasonal Giving - Donations made during the holidays season
 SME - Small and Medium Enterprises
 Ch&Y - Children and Youth

NPO - Non-Profit Organization
 General Public - Groups of people or individuals who were assisted through economic and material aid in cases of natural recovery from disaster, or difficulties of living
 Poverty Relief – Donations carried out with the aim to mitigate poverty for individuals or families living in economical difficulties or during natural disasters